

PATHLANDER™ ACCESSORY



WINCH KIT

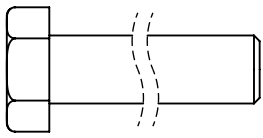
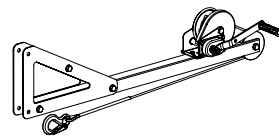
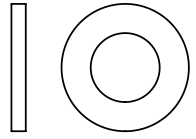
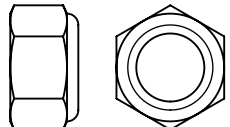


DISCOVER THE WOODLAND™

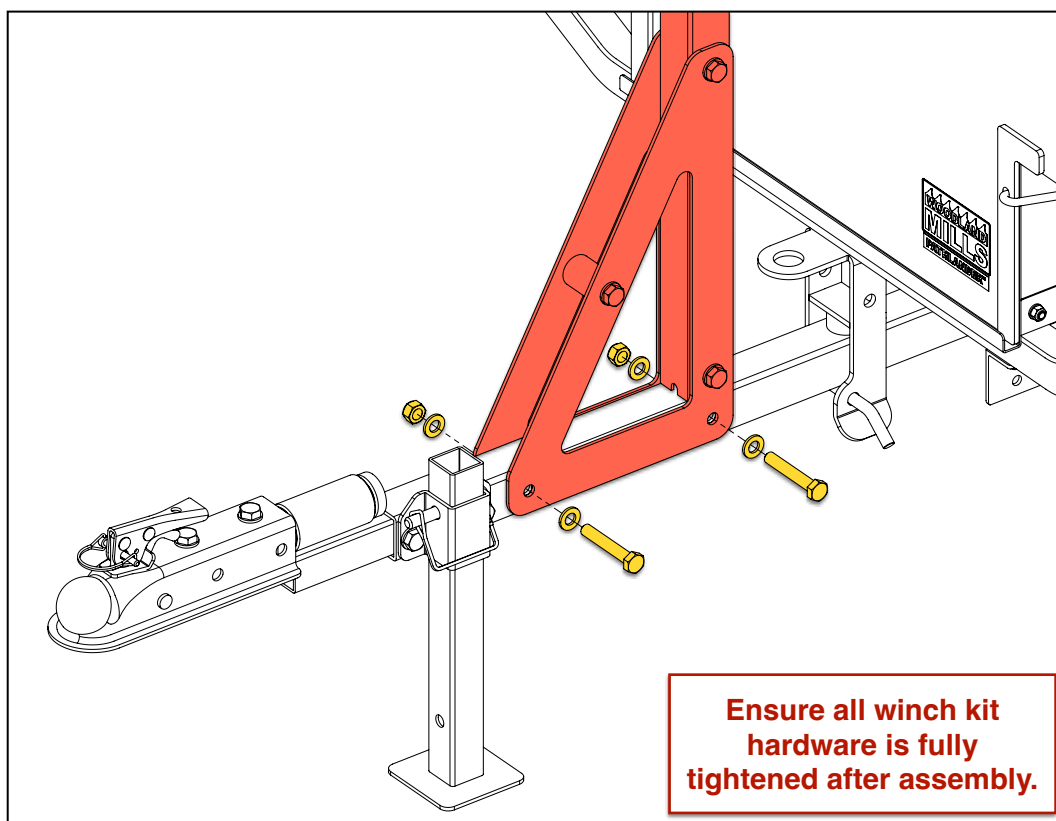
Pathlander™ is a trademark of Woodland Mills, Inc.

ASSEMBLY

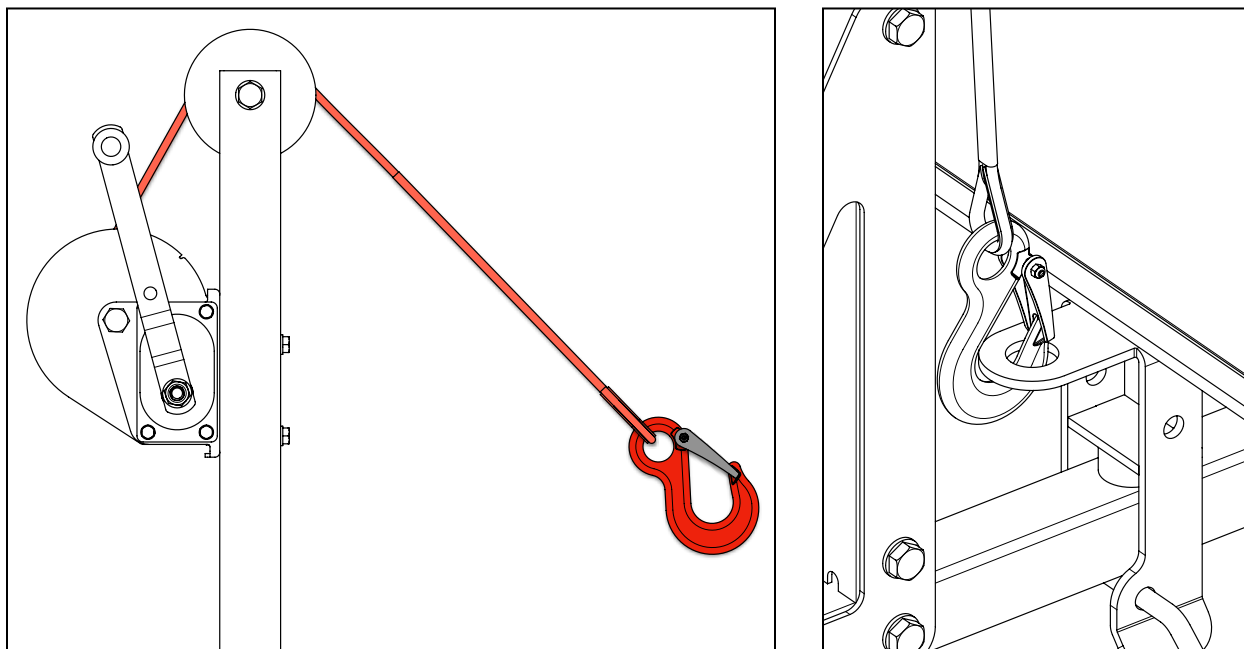
Assemble the winch kit to the Pathlander trailer using the hardware and components listed in the table below as instructed.

2x	M12 X 75 mm Hex Bolt		1x	Winch Kit Assembly	
4x	M12 Lock Nut				
2x	M12 Flat Washer				

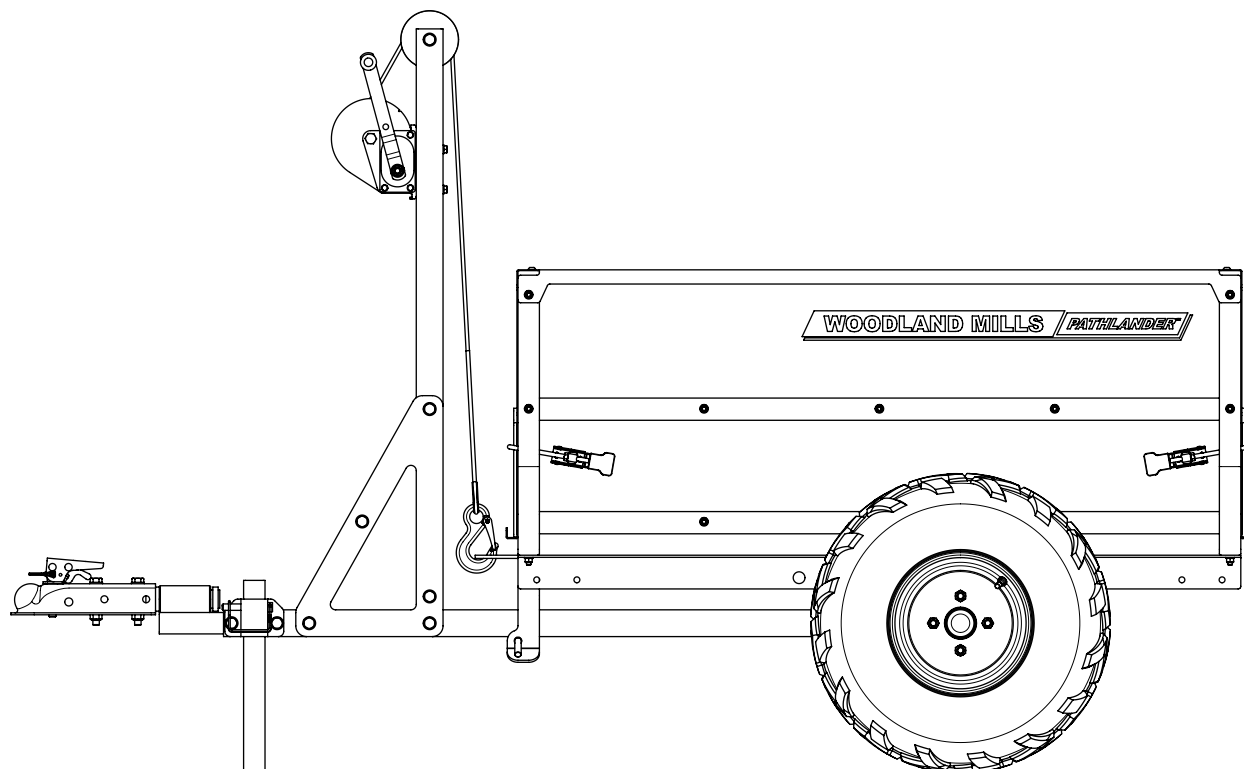
Assemble the winch kit to the chassis draw bar using two (2) M12 X 75 mm hex bolts, four (4) M12 flat washers, and two (2) M12 lock nuts. Fully tighten *all* the hardware.



Finally, route the winch rope over the pulley and connect the hook to the hole in the pickup tab.

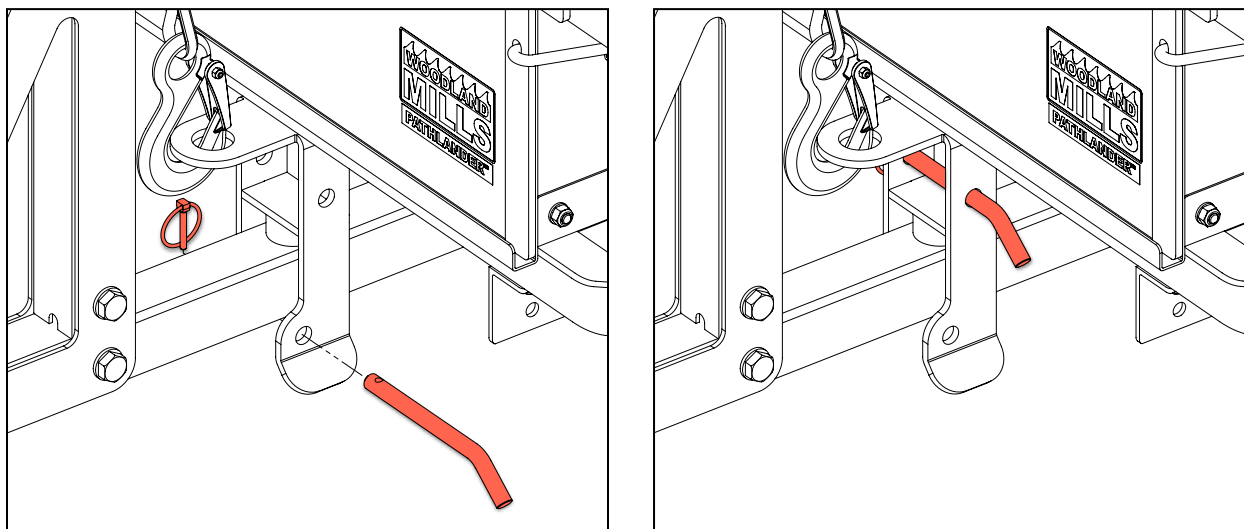


Use the winch to wind any slack out of the winch rope so that the hook does not rattle around during travel.

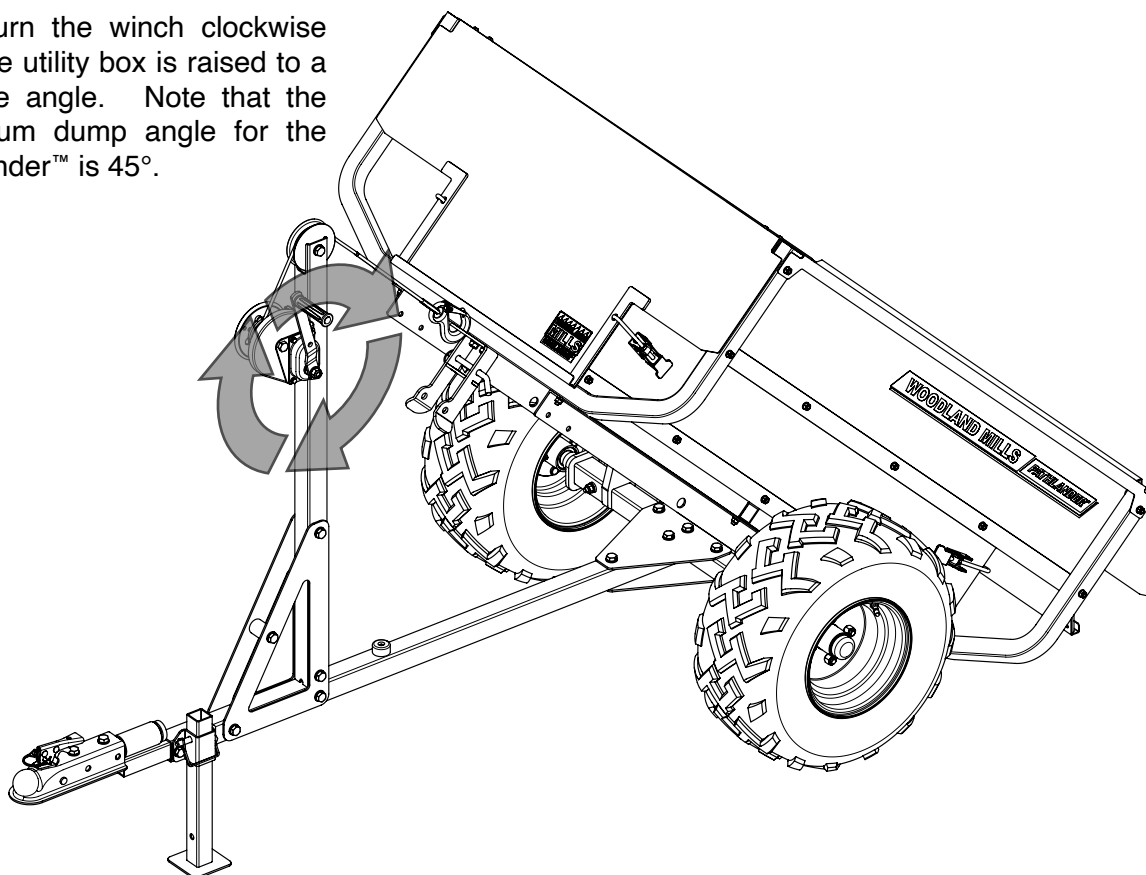


OPERATION

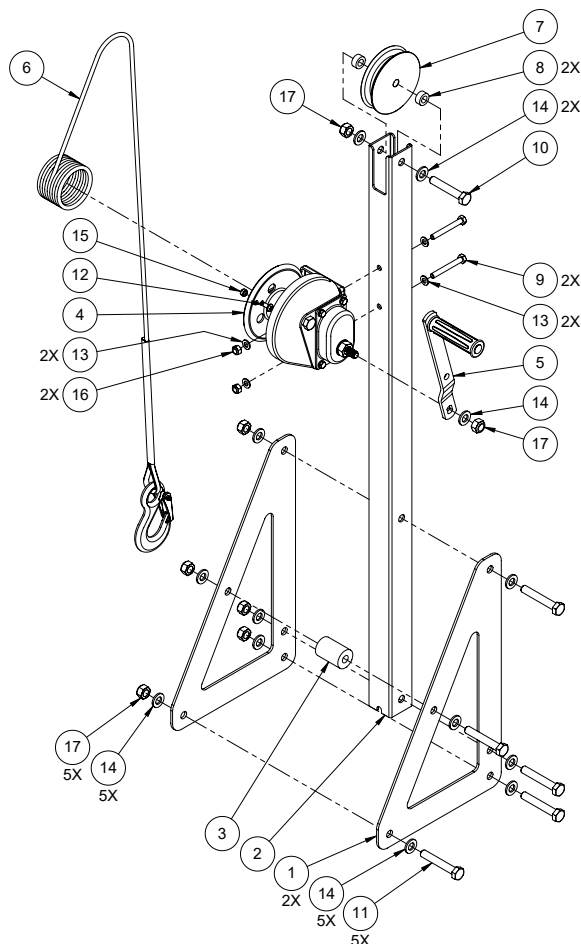
To raise the utility box, first remove the linch and clevis pins from the bottom set of holes in the pickup and then store them in the upper set of pickup holes as shown below.



Now turn the winch clockwise until the utility box is raised to a suitable angle. Note that the maximum dump angle for the Pathlander™ is 45°.



EXPLODED ASSEMBLY VIEW



PARTS LIST

Item	Qty	Part No.	Description
1	2	0009241	WINCH SIDE PLATE
2	1	0009242	WINCH POST
3	1	0001102	SPACER, 13 ID X 33.5 OD X 50 mm LG
4	1	0001497	WINCH, 1200 lb
5	1	0001498	WINCH HANDLE, 1200 lb
6	1	0009875	SYNTHETIC ROPE W/ 7/8-8 WLL2T HOOK, 10 ft [3 m] LG
7	1	0008337	WIRE ROPE PULLEY, 75 mm GROOVE, 12 mm BORE
8	2	0004947	SPACER, 12 ID X 21 OD X 9.5 mm LG
9	2	HHB-MBJ120PCJ	HEX HEAD BOLT, CLS 8.8, M8 X 1.25, 65 mm LG, 22 mm LG THD
10	1	HHB-MBR125PCJ	HEX HEAD BOLT, CLS 8.8, M12 X 1.75, 70 mm LG, 30 mm LG THD
11	5	HHB-MBR130PCJ	HEX HEAD BOLT, CLS 8.8, M12 X 1.75, 75 mm LG, 30 mm LG THD
12	1	PPH-MBE063FCE	SCREW, PPH, CLS 4.8, M6 X 1, 12 mm LG, FULL
13	4	FTW-MBJ000AJ	FLAT WASHER, M8
14	13	FTW-MBR000AJ	FLAT WASHER, M12
15	1	HLN-MBECH	LOCK NUT, CLS 8, M6 X 1
16	2	HLN-MBJCH	LOCK NUT, CLS 8, M8 X 1.25
17	7	HLN-MBRCH	LOCK NUT, CLS 8, M12 X 1.75



DISCOVER THE WOODLAND™